

FOOD SECURITY & LIVELIHOOD PROGRAMME



ORGANIZATIONAL INTRODUCTION

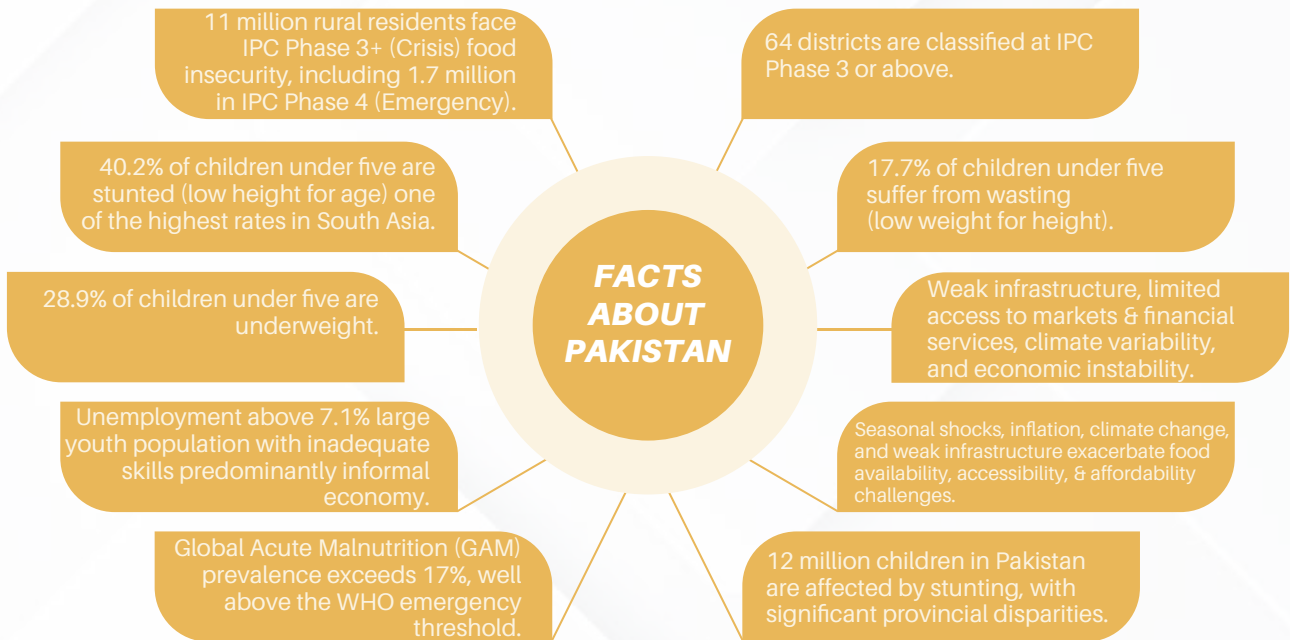
Pak Mission Society (PMS) is a Faith-Based National Humanitarian and Development Organization, registered under Section 42 of the Companies Act, 2017, with the Securities and Exchange Commission of Pakistan (SECP). PMS holds a valid Memorandum of Understanding (MoU) with the Economic Affairs Division (EAD).

PMS has been dedicated to empowering vulnerable and unreached communities across Pakistan, with footprints in over 47 districts and strong outreach through 11 regional offices. PMS has been serving communities to live with dignity, hope, and self-reliance, and has directly impacted more than 1.7 million beneficiaries since its inception in 2004, without any discrimination based on religion, ethnicity, gender, or social background.








THEMATIC GOAL

To strengthen community resilience by ensuring food security, improving nutrition, promoting sustainable livelihoods, and providing adaptive cash-based interventions that respond to emergencies and foster long-term economic stability.

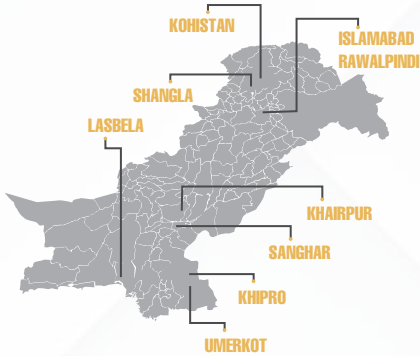


WHAT WE ENVISION

-  Food-secure communities where households have year-round access to safe, sufficient, and nutritious food without seasonal shortages.
-  Resilient livelihoods that withstand economic, environmental, and social shocks, supported by climate smart agriculture, vocational skills, and market linkages.
-  Economic empowerment through cash transfers, MSME development, startups, and financial inclusion.
-  Inclusive growth where women, youth, minorities, and marginalized groups have equitable access to opportunities, resources, and markets.
-  Sustainable development anchored in responsible resource management, adaptive practices, and community led solutions.

GEOGRAPHICAL FOCUS

- 📍 Kohistan
- 📍 Shangla
- 📍 Khairpur
- 📍 Sanghar
- 📍 Umerkot
- 📍 Lasbela
- 📍 Islamabad
- 📍 Rawalpindi
- 📍 Rajanpur



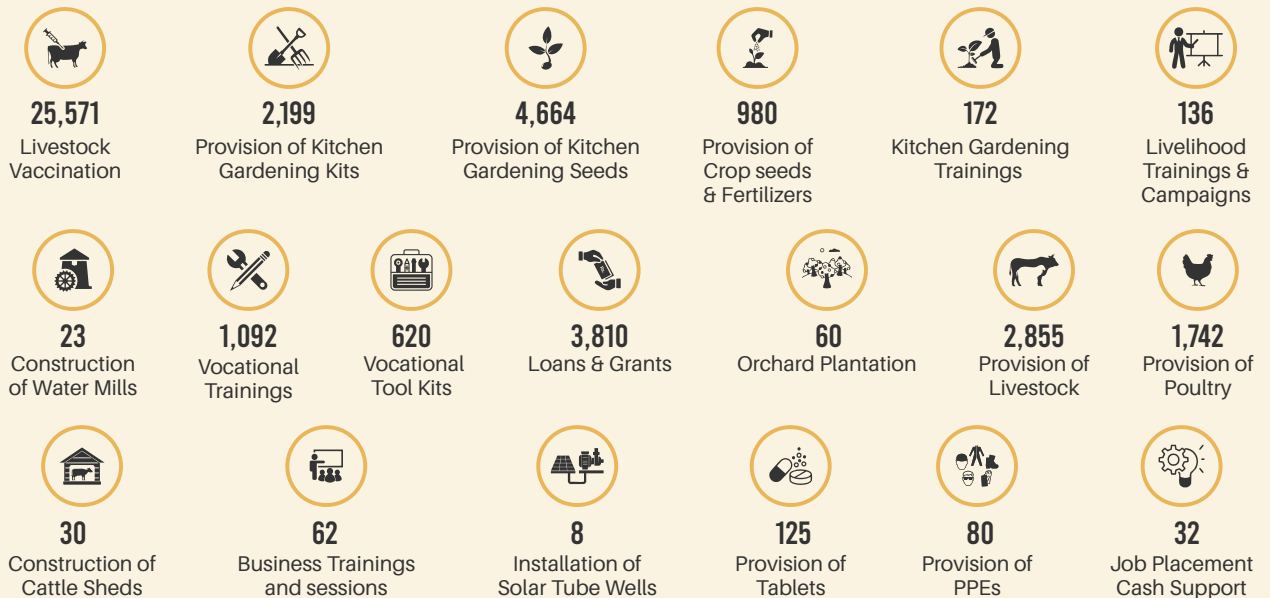
SUB-THEMES OF FOOD SECURITY, LIVELIHOOD & CASH

-  Emergency Food Access & Cash Programming
-  Sustainable Agriculture & Livestock
-  Market-Driven Livelihoods
-  Shock-Responsive Systems
-  Financial Inclusion

KEY PRINCIPLES

- Community-led and market-driven approaches.
- Sustainability and resilience.
- Inclusivity and gender equity.
- Shock-responsive and adaptive solutions.
- Integrated nutrition, health, and livelihoods interventions.

OUR INTERVENTIONS OVER THE LAST 14 YEARS





FUTURE PLANS

Enhance Market Linkages for MSMEs and startups.



Build Anticipatory Action Systems for early warning and proactive interventions.

Strengthen Climate Smart Agriculture models in drought prone and saline-affected areas.



Scale Vocational Training linked to private sector demand.

Expand Cash Programming for rapid emergency response & recovery.



OUR PARTNERS



FOR MORE INFORMATION PLEASE CONTACT

✉ info@pakmissionsociety.org